



Installation Guide for the Easyglide EG55 Roller Garage Door

Please read these instructions carefully and in full before commencing the installation of your EG55 roller garage door

IMPORTANT SAFETY INSTRUCTIONS

The EG55 must be installed and operated in accordance with the instructions supplied; failure to do so could result in damage to your door and compromise your safety.



WARNING AND GUIDANCE NOTE

1. At least TWO people are required to install this product.
 2. Prior to installing please remove all rings, watches and sharp objects to avoid any possibility of damage.
 3. Prior to installing please remove any items of loose clothing to avoid any risk of entanglement or injury.
 4. Your door comes complete with a 3 pin plug as standard (this is supplied and must be fitted with a 5amp fuse) which should be plugged straight into a 13amp 3 pin switched socket in the vicinity of your door, should you need any extra electrical work this must be carried out by a suitably qualified person, if you have any doubts please consult an electrician.
 5. Your receiver box should be installed in a location that is at a comfortable height to operate the push buttons, but out of the easy reach of children.
 6. Please do not allow children to operate the push buttons or remote control fobs as serious injury can occur from misuse.
 7. Warning you must have a clear line of sight of the whole of your roller garage door when the door is in operation, failure to do so may result in harm to persons or damage to your roller garage door.
-



Preparing for installation

1. Carefully remove your old garage door and frame
2. Sweep down the sides and lintel with a brush
4. Make sure the opening is free from raised metal or brick work
5. Clear debris from the floor and surrounding area



1. Unpack the door and check all parts are correct and present

2. Roll out the door and check for any damage

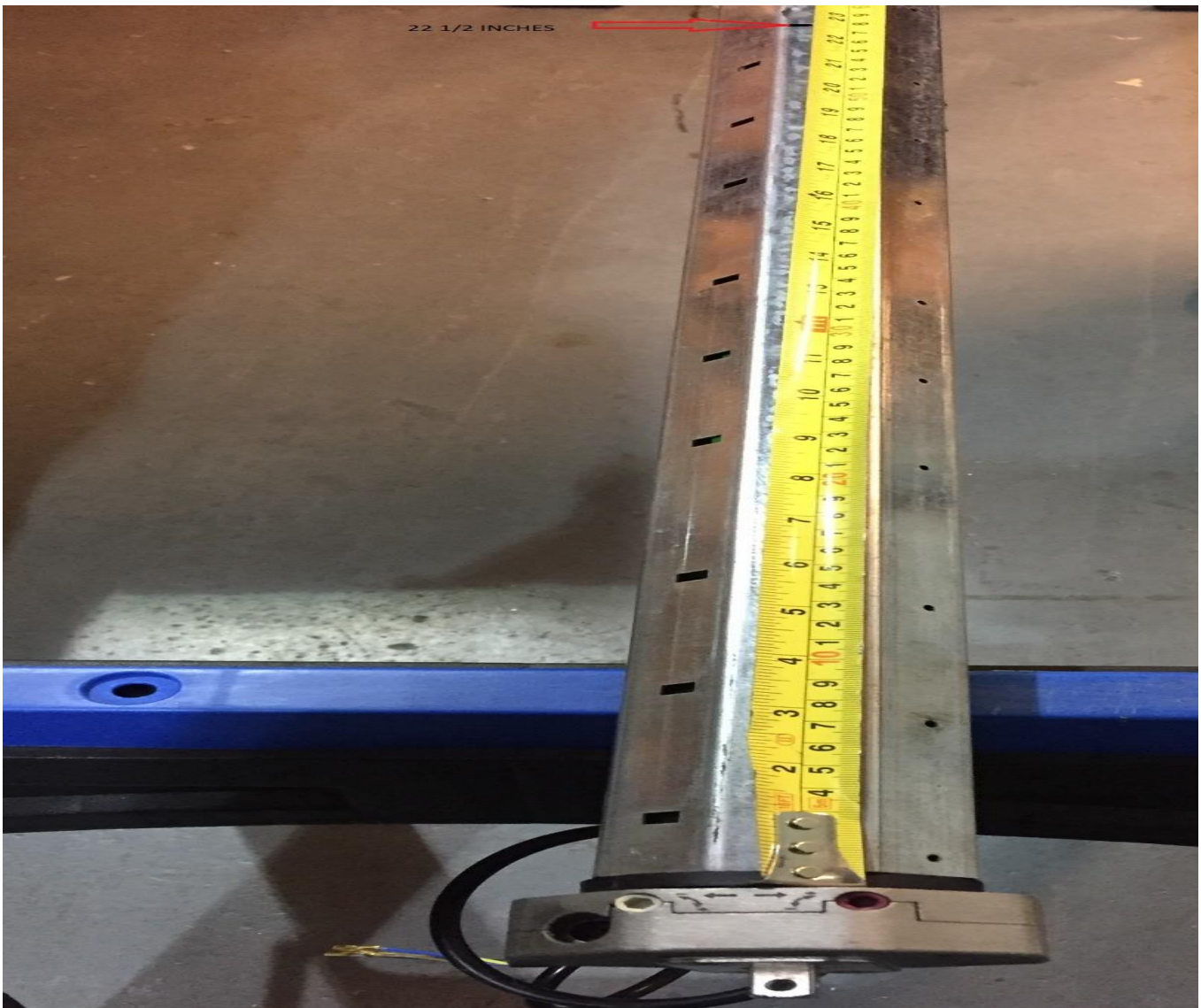


3. Remove roller from the door



TUBE CUTTING

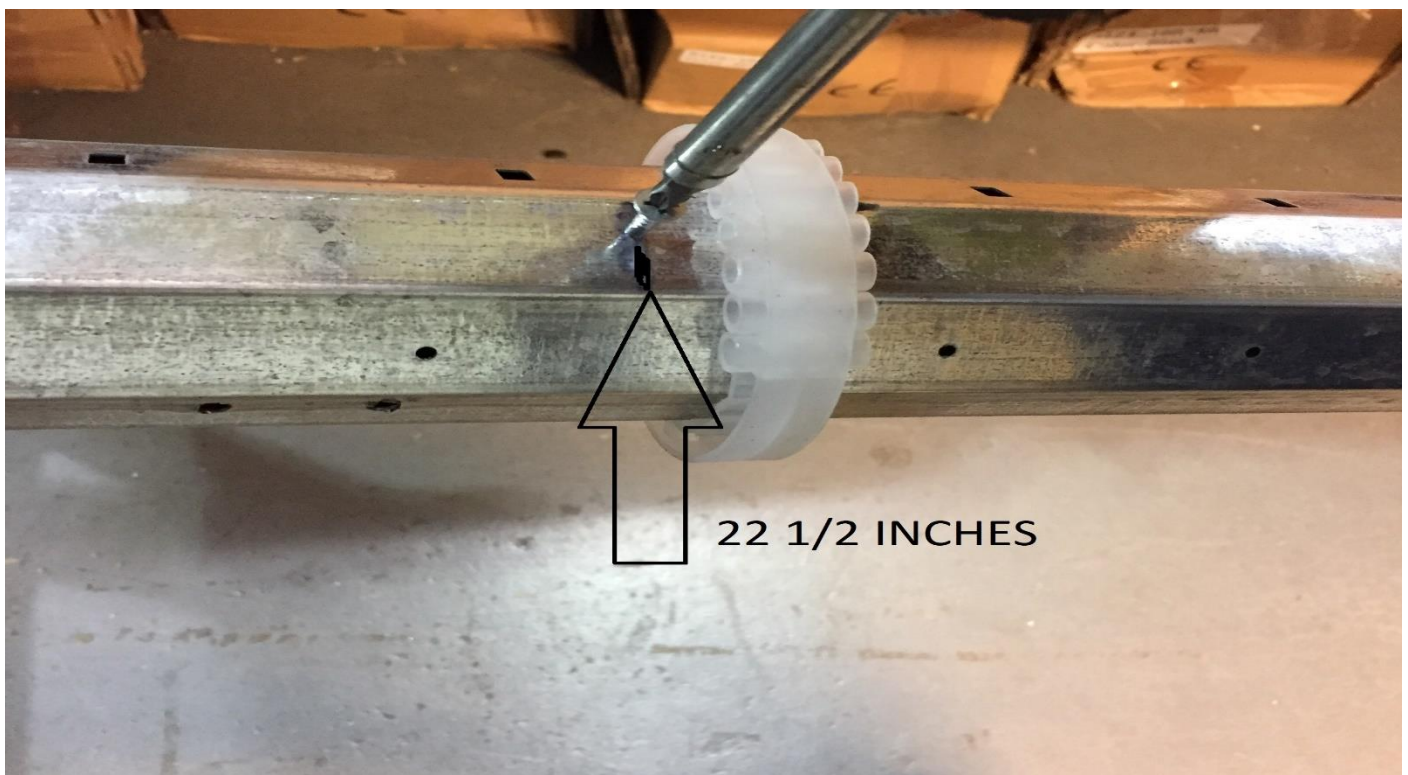
If needed remove the motor and cut the tube to the correct length.



Refit the motor and measure 22 ½ INCHES



Then refit the screw through the tube to secure the motor.



Making sure the white collars and locking straps ARE NOT OVER THE MOTOR



BEHIND BRICKWORK FIX

4. Mount the side brackets to the garage wall.



5. Fit the top roller onto the side brackets and fix with split pins provided.





BETWEEN BRICKWORK FIX

1. Take out the old Door





2. Fix up an 8 inch or 200mm cover board (available at all plastic and fascia outlets)



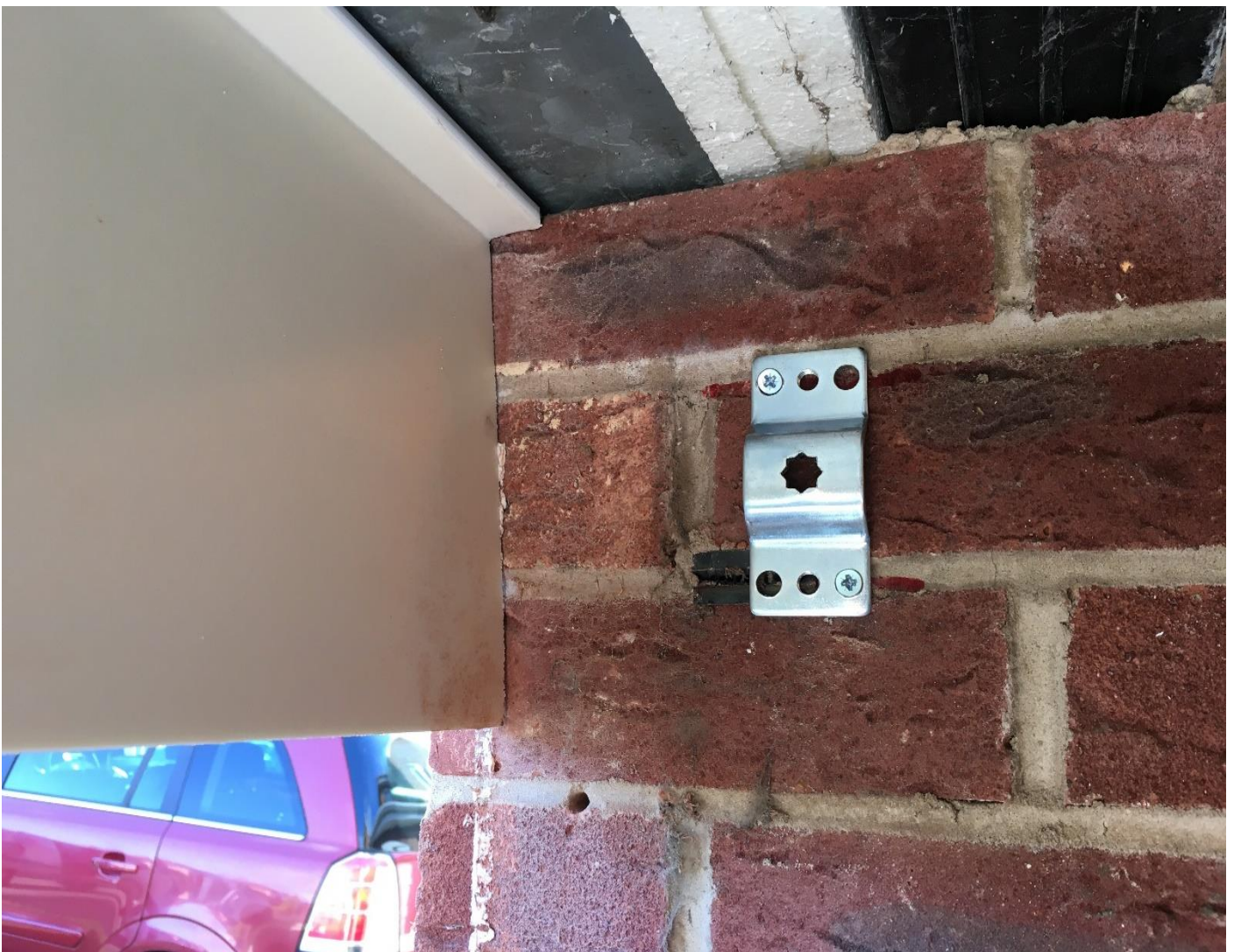


3. Hold up the white side plate so that it is level with the bottom of the trim and mark the wall.





4. Fix the silver star bracket direct to the wall making sure its to the centre of the lines



5. Measure between the two brackets, take out the tube motor and cut the tube to the correct size



6. Wire the tube motor to the wall mounted control panel and fit the 13amp plug





7. Measure from the centre of the roller to the floor to determine the height of the door and remove any slats that are not required



8.If needed cut the side guide rails to size



9. Cut and angle the top inside edge of the side rails (see photos) this will help guide the door into the guides





10. Drill holes in side rails and mount onto the wall



11. Roll the door up and hold in position, slide the collars onto the hinge locking straps then send the door up using the control or remotes. The door will stop half way, then use the green limit tool provided to adjust the limit switches until the door is rolled up to the correct position. (please note this will require two people)

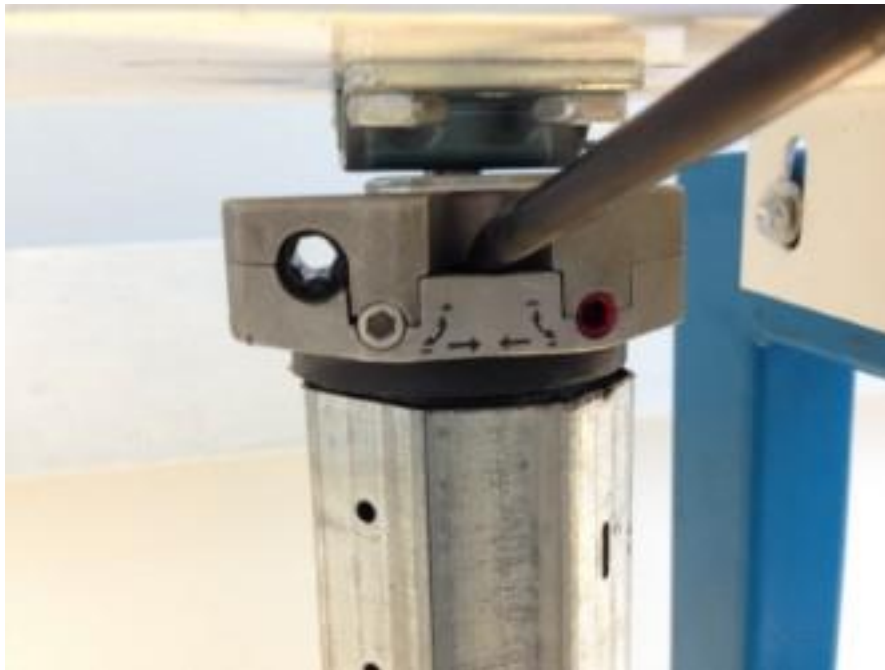
Please see video

<https://www.youtube.com/watch?v=bHg1FTn-BQk&feature=youtu.be>

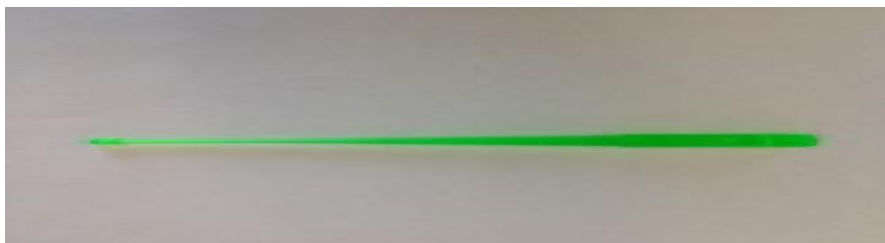


SETTING THE DOOR LIMITS

Now you have fitted your door you now need to set the up and down limits



Limit setting screws



Tool for setting limits

Please see video

<https://www.youtube.com/watch?v=bHg1FTn-BQk&feature=youtu.be>